

PYREX-NITRIDE

PRODUCT INTRODUCTION FOR JUNE 2006:

PYREX-NITRIDE- SPM-PROBES

Leading edge in sharpness and durability

General

- SPM probe for a wide range of applications
- fits to all well-known commercial SPMs
- silicon nitride cantilevers and tips
- cantilevers are supported by a holder chip made of pyrex glass
- designed for for various imaging applications in contact mode or dynamic mode

Material Features

- low-stress silicon nitride for lowest cantilever bending
- excellent hardness for wear resistance and extended lifetime

Cantilevers

- multi-lever design with four rectangular cantilevers
(version with triangular cantilevers to be introduced later this year)
- reflective chromium / gold coating on the backside of the cantilevers
- stress compensated with bending below 3°

Holder

- holder chips made of pyrex material (3.4mm x 1.5mm x 0.2mm)
- easy handling due to single holder chips

Tip

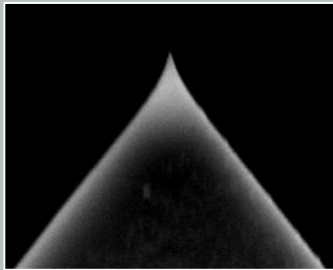
- oxide sharpened pyramidal probe tips
- tip height 4 μm and tip radius of curvature typically < 15 nm
- macroscopic half-cone angles 35°

Unique features in brief:

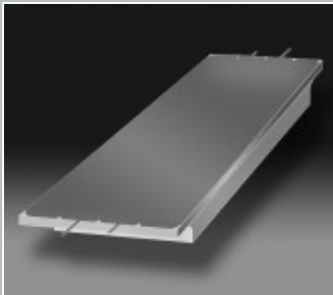
- single holder chips for easy handling
- multi-lever design with four rectangular cantilevers
(version with triangular cantilevers to be introduced later this year)

Package sizes

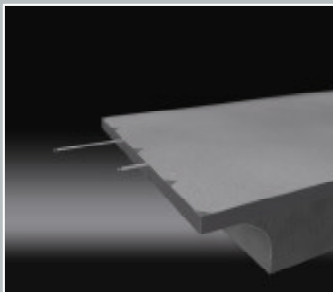
- 20 and 50 probes



Tip Close Up



3D Sketch
Rectangular Cantilevers



Close up 3D Sketch
Rectangular Cantilevers